



**Lantmännen is an agricultural cooperative  
and Northern Europe's leader in agriculture,  
machinery, bioenergy and food products**





### **Agribusiness**

Input materials  
Feed  
Grain trading



### **Machinery**

Tractors & Combines  
Equipment  
Farming technology



### **Biorefinery**

Biofuels  
Biomaterials  
Ingredients



### **Food production**

Mills  
Bakeries  
Meat production







17 000

Farmers own  
Lantmännen

70

Billion SEK in  
yearly turnover

12 000

Employees  
across the globe

+20

Countries with  
operations




## The Lantmännen model

With operations throughout the value chain, Lantmännen creates value from farmland and reinvest the profit in farming of the future. For example, by investing in research to develop more sustainable cultivation methods. When doing business with Lantmännen, you are not only getting responsibly produced products, but you also contribute to making farming thrive.

# We make farming thrive

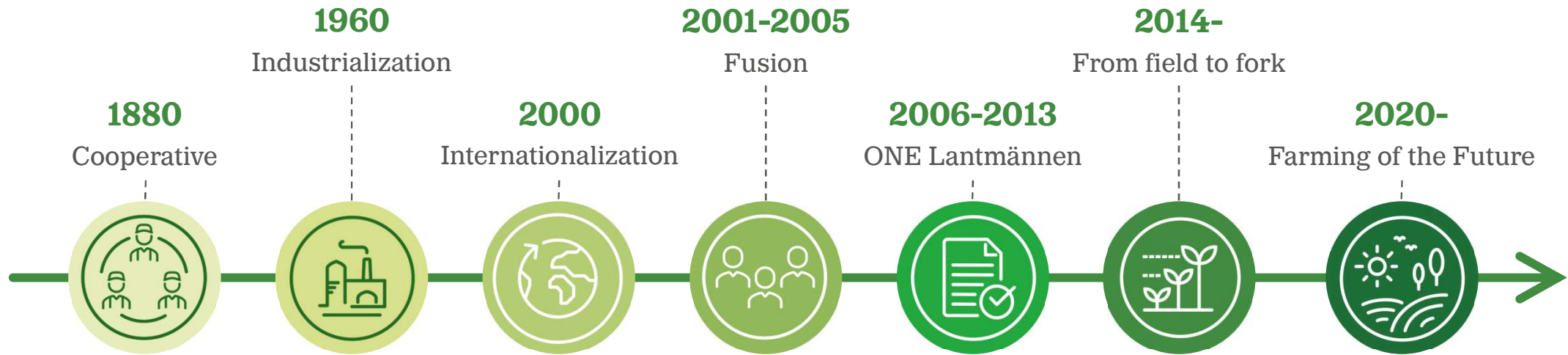






” Lantmännen's assignment is to contribute to the profitability of our members' farms and to optimize the return on their capital in Lantmännen

# We Have a Long History and Solid Experience



# Lantmännen's Businesses

Agriculture  
Sector



**36%**

of group net sales

Energy  
Sector



**10%**

of group net sales

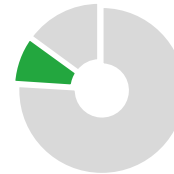
Food  
Sector



**30%**

of group net sales

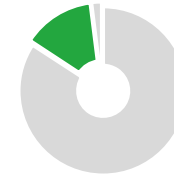
Scan  
Business Area



**9%**

of group net sales

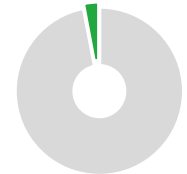
Swecon  
Business Area



**14%**

of group net sales

Real Estate  
Business Area

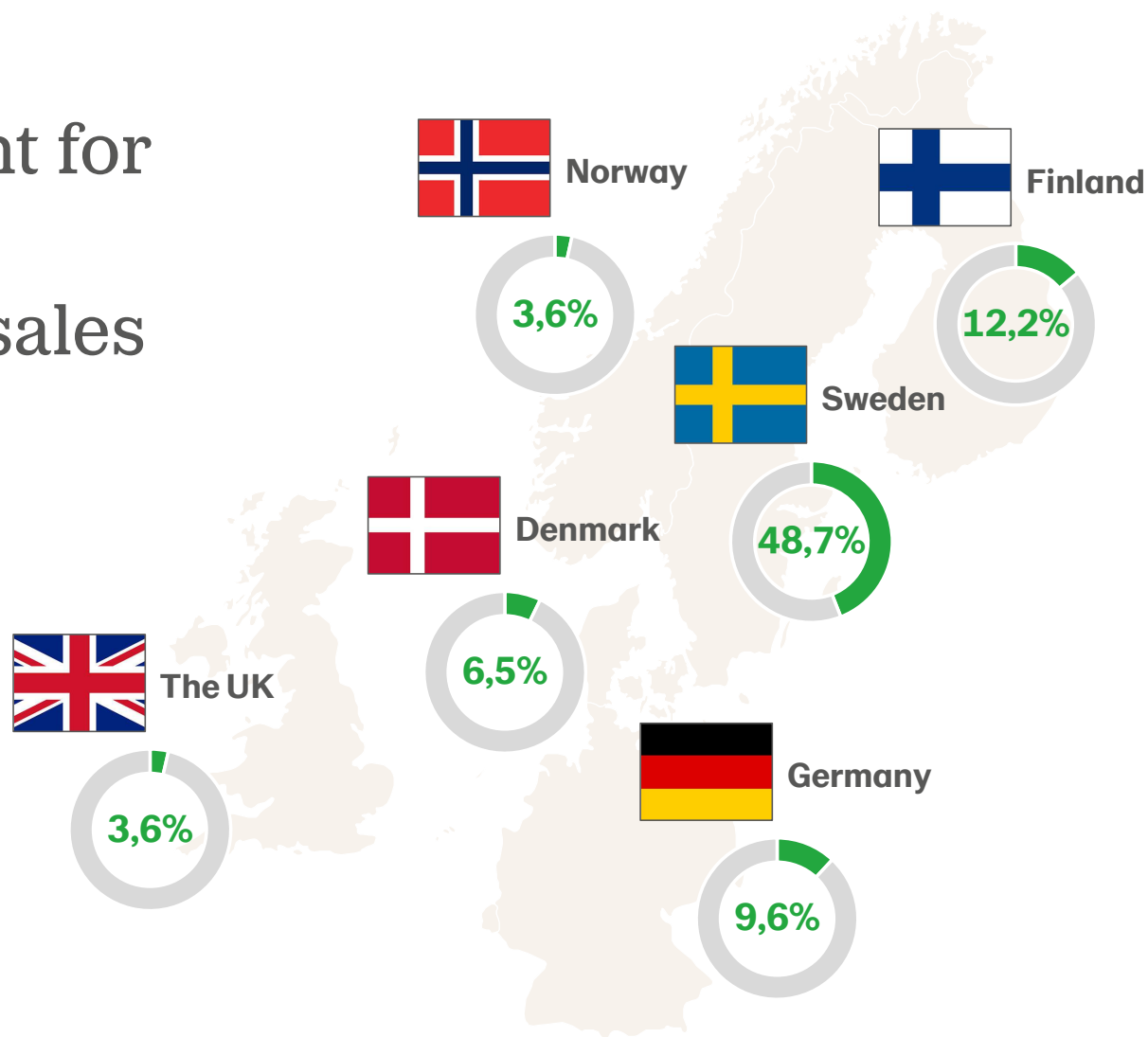


**1%**

of group net sales

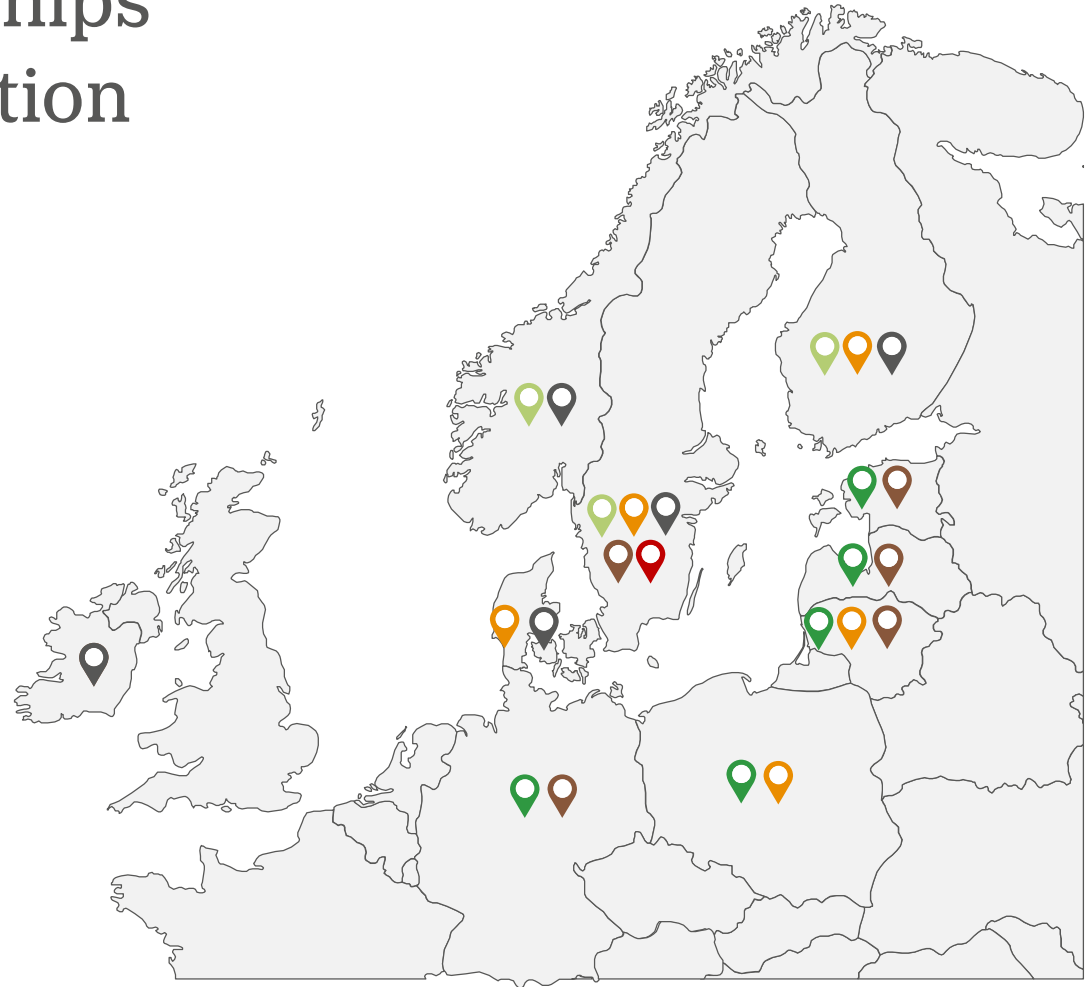
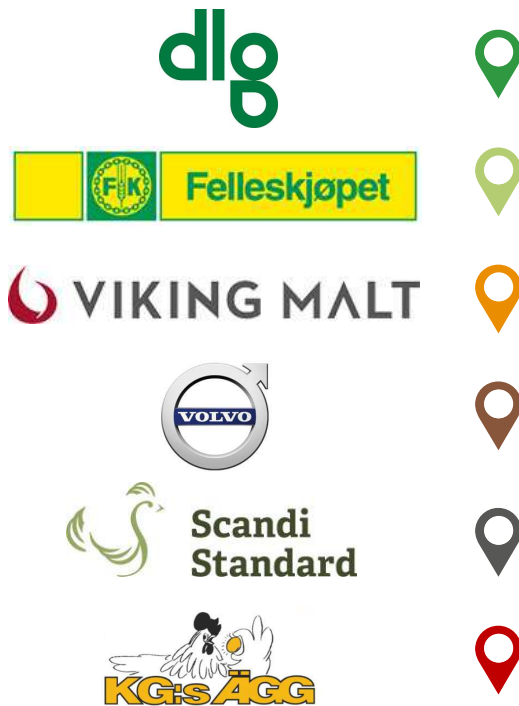


Six markets account for  
85 percent of  
Lantmännen's net sales



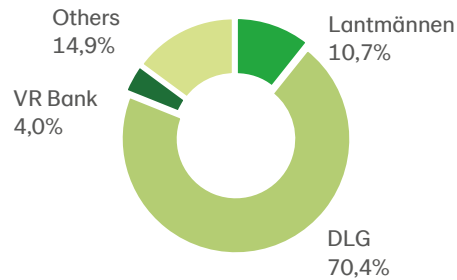
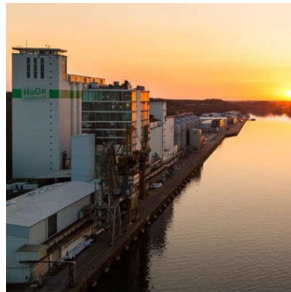


# Strategic Business Partnerships for Growth and Value-Creation



# International Holdings

## team SE

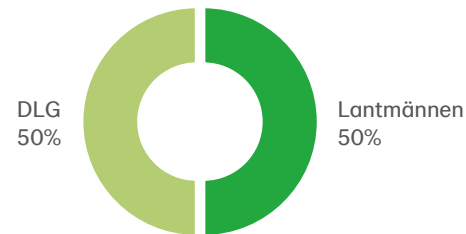


### Germany

A broad range in construction trade, energy, and agriculture

Net sales: 6 BEUR  
5 000 employees

## Scandagra

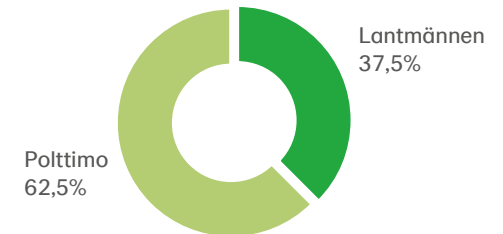


### Baltics / Poland

Grain trading and sales of inputs to agricultural companies

Net sales: 950 MEUR  
530 employees

## Viking Malt



**Finland, Sweden, Denmark, Poland and Lithuania**  
Refines grain and produces malt

Net sales: 400 MEUR  
280 employees



# Lantmännen's Climate Targets

- Lantmännen's climate targets are aimed at reducing emissions in line with the Paris agreement, which requires halving CO<sub>2</sub> emissions every ten years starting in 2020.
- The targets cover the entire value chain and are divided into three parts, with a focus on fossil-free production and fossil-free transports, continued energy efficiency measures, and investments and efforts for reduced climate impact.



## **Primary production:**

Create conditions for a sustainable primary production, with a halved climate impact every ten years and climate neutrality by 2050.



## **Own production:**

Reduce climate impact from own production, in relation to net sales, by 50 percent by 2030 with 2019 as the base year.



## **Purchased transports:**

Reduce climate impact from transports by 50 percent, in relation to net sales, by 2030 with 2019 as the base year.

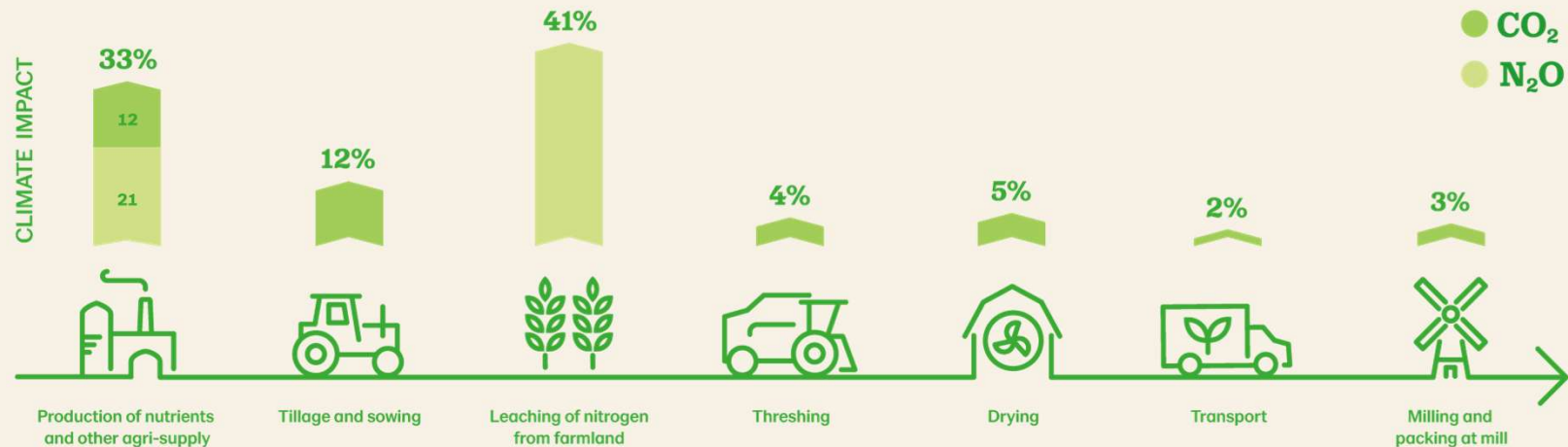




# Farming is the most important part of the food value chain

Most of the benefits, nutrients and energy are created in the cultivation stage – but also the majority of the climate impact.

Example: production of wheat flour



An aerial photograph of a vast, green agricultural field. In the foreground, a red tractor is visible, moving through the field. The field is divided into numerous rectangular plots, suggesting a large-scale agricultural experiment or breeding program. In the background, a line of trees and a small red building are visible, and further back, several wind turbines stand against a pale sky.

# Plant breeding for the future

 **Lantmännen**



# 11 crucial areas for future farming



Precision farming, digitalization and optimal management



Sustainable plant nutrients



**Plant breeding**



Fossil-free farming



Cropping systems



Carbon sequestration and renewable energy from farmland



Reduced nitrogen losses



Reduced leakage of plant nutrients



Sustainable plant protection



Adapting farming to climate change



Biodiversity



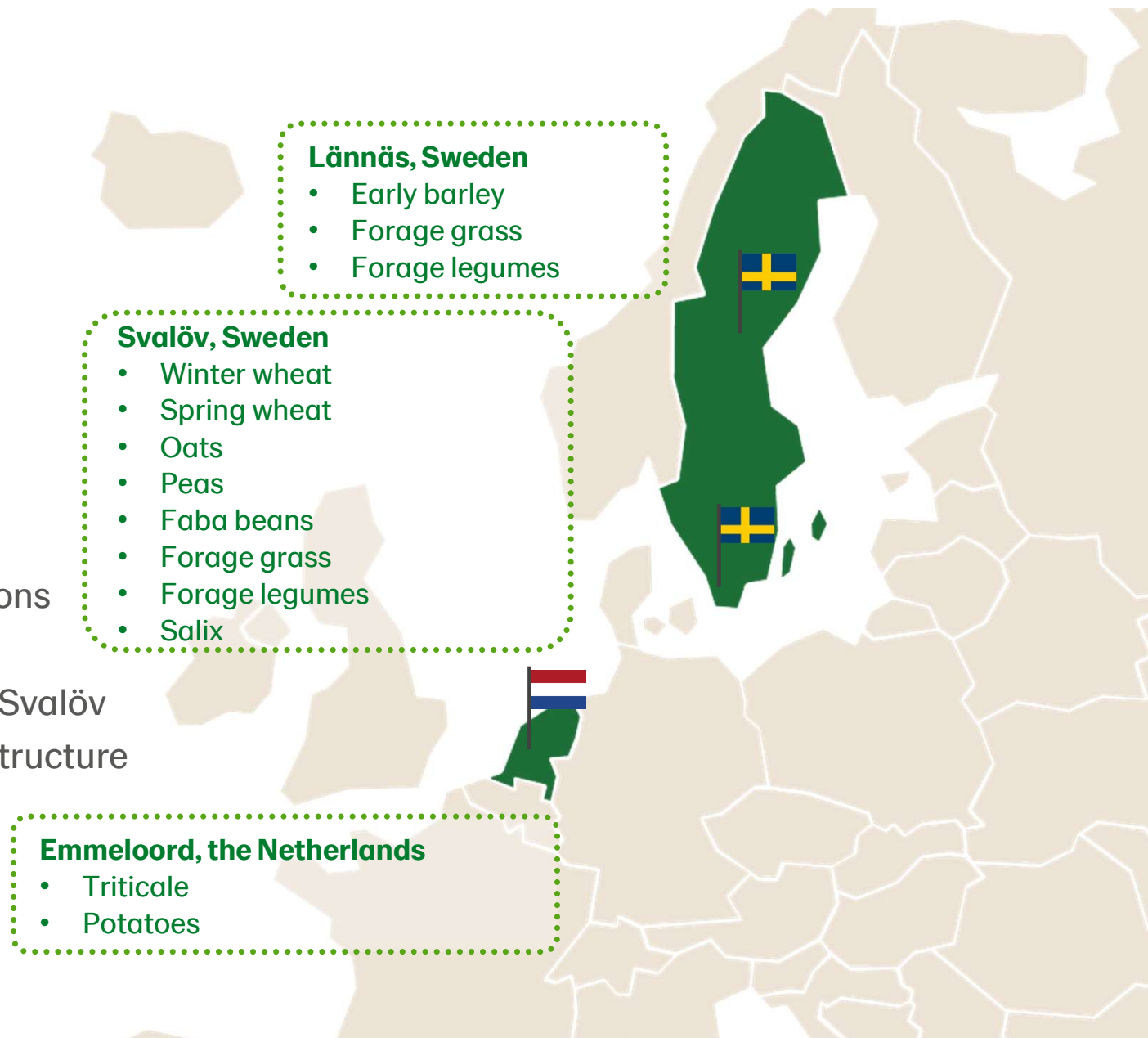
# Sustainable intensification in a changing climate

- Secure food production and supply at all times
- Develop varieties adapted to our climatic conditions. Long days makes it difficult to moved plant material north.
- Climate adaption for sustainable intensification
  - Broad adaptability makes stabile yield levels
  - Drought- and stress tolerance
  - Resistance to pathogens
  - Plant nutrient efficiency
- Produce the right products of excellent quality to increase the supply and deminish food losses



# Lantmännen Plant Breeding

- ~90 colleagues
- Three Lantmännen breeding stations
- Eleven breeding programs
- Future Farms: Bjertorp/Viken och Svalöv
- Competence and advanced infrastructure



[https://www.youtube.com/watch?v= UuB9 MUw2Q](https://www.youtube.com/watch?v=UuB9_MUw2Q)





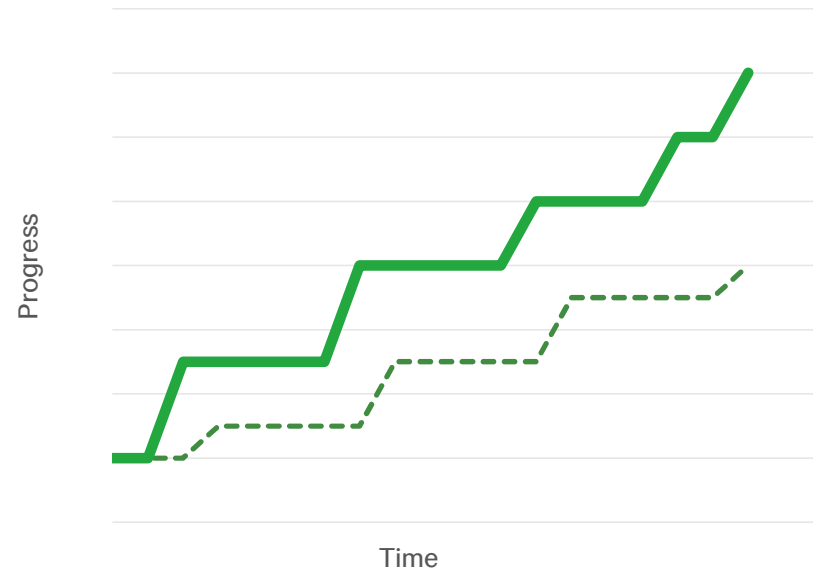
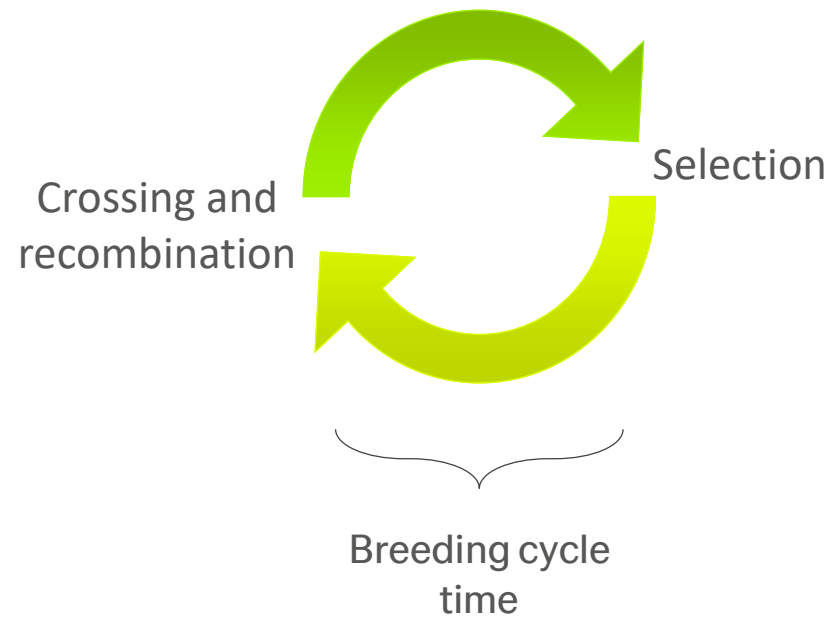
# **Traditional plant breeding**



# **Speed breeding & genomic selection**



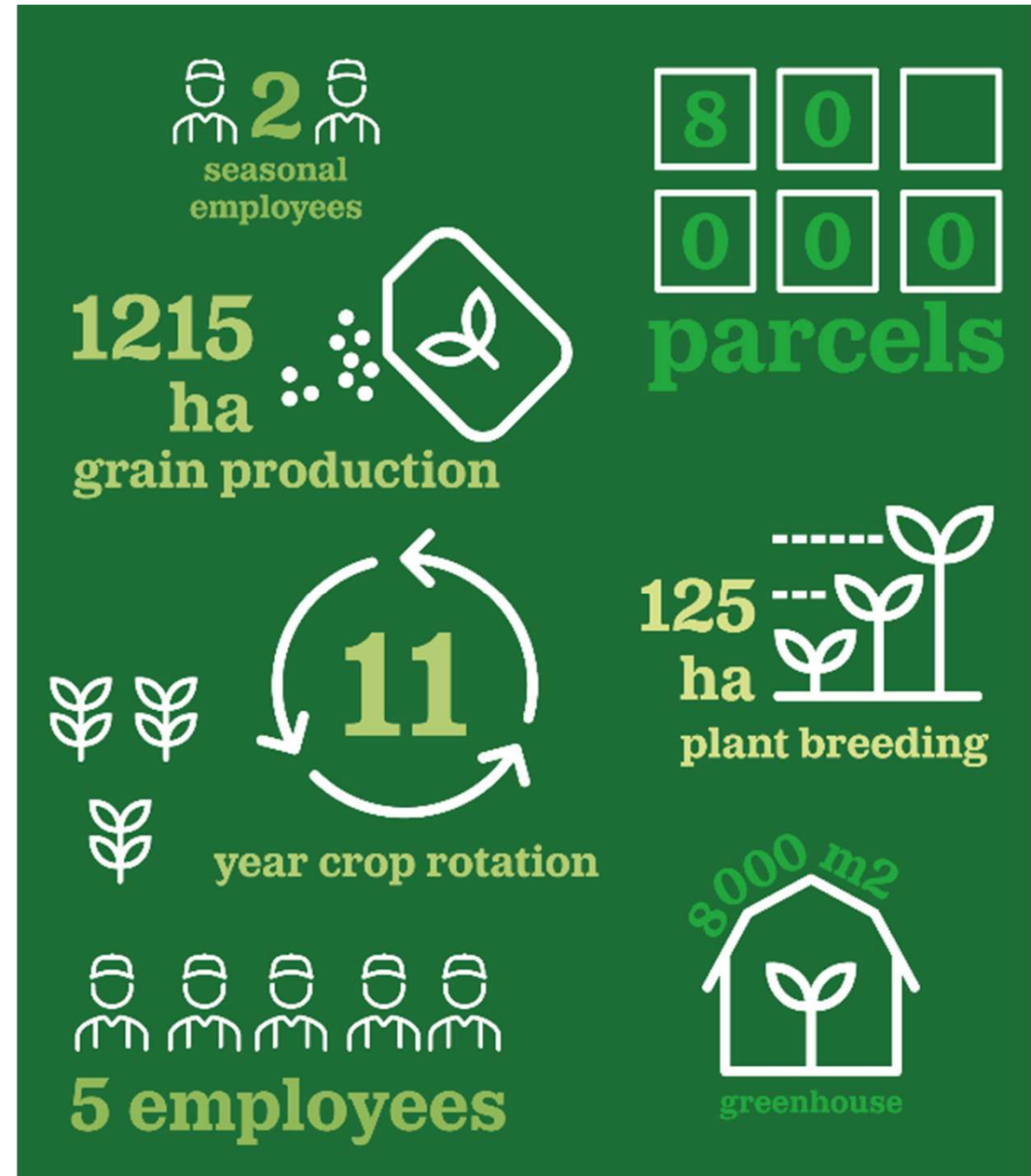
# Progress by Rapid Cycling Genomic Selection



# Farm of the Future

## Svalöv in numbers

- In the 1830's, several farms were merged and formed what today is Farm of the Future Svalöv
- 1 390 hectares of areal land in total, of which 125 hectares are used for plant breeding, 50 hectares for elite seed and 1 215 hectares for cereal and seed cultivation
- 11-year crop rotation to ensure clean fields for yield trials and seed cultivation.
- Storage capacity of 1 000 tonnes. The remaining volume is delivered to Lantmännen's grain receptions during harvest.
- A fleet of modern machines and tractors equipped with precision farming tools. Precision farming is performed on all hectares to increase the farm's yield and at the same time reduce the climate impact.





# Framework for Farming of the Future

## Knowledge



## Collaboration



## Evidence



**FRAMTIDSGÅRDEN**

BJERTORP | SVALÖV | VIKEN

## Offering

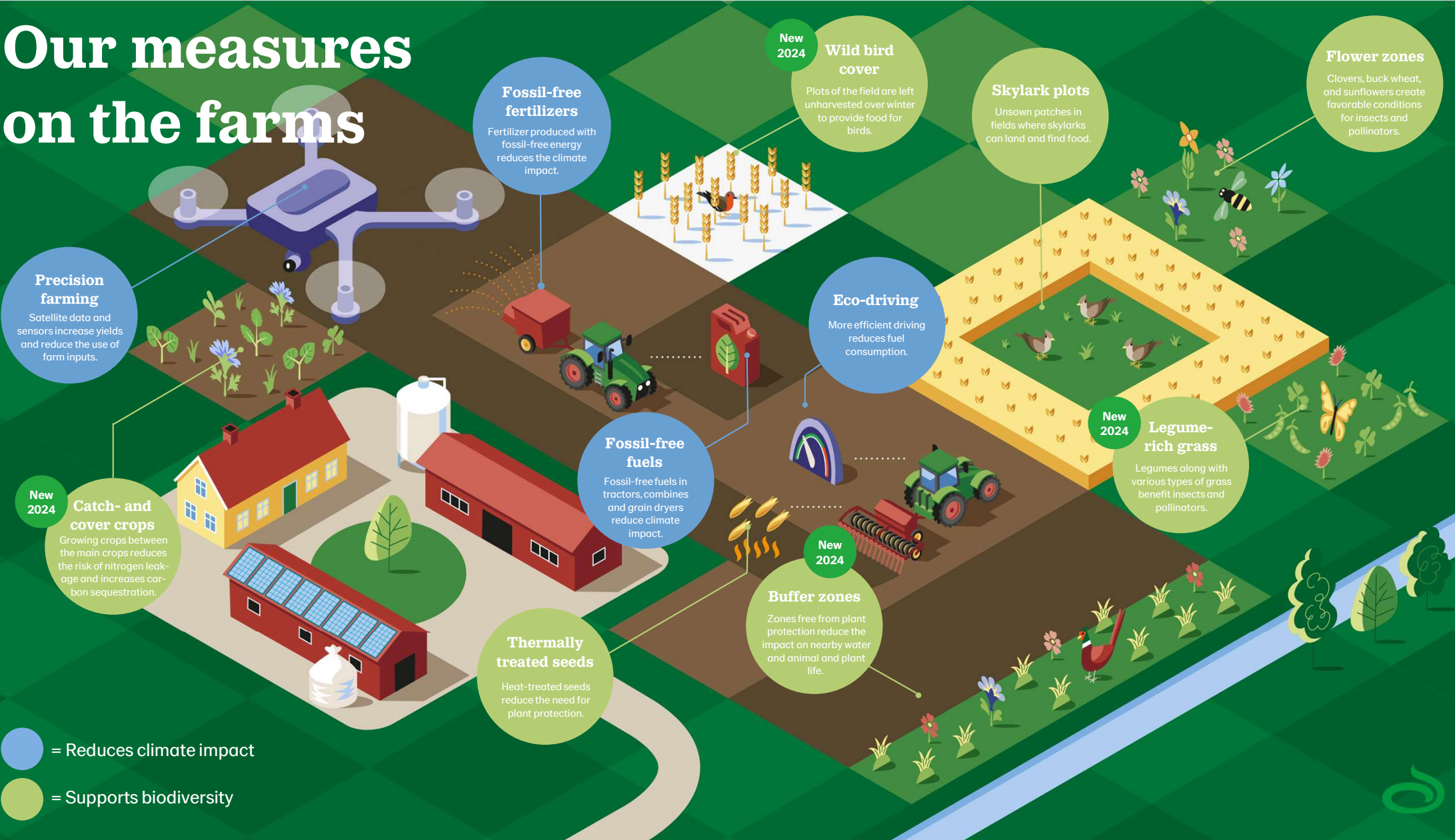


## FARMING OF THE FUTURE

The road to climate neutral farming 2050



# Our measures on the farms





**CLIMATE  
& NATURE**

**Lantmännen's program  
for farming of the future**

In 2015, at Lantmännen we decided to make a real difference. Together with our owners, 17,000 committed Swedish farmers, we took the first step towards transforming our cultivation. Climate & Nature is Lantmännen's program for farming of the future and includes concrete measures for biodiversity and reduced climate impact.







# Lantmännens Plant Breeding

## Strategic focus

- Develop **competitive varieties** for Swedish and selected international markets.
- Value for the **entire value chain**.
- **Efficient** plant breeding and continuous development of relevant **technology platforms**.







# Thank You!

 **Lantmännens**